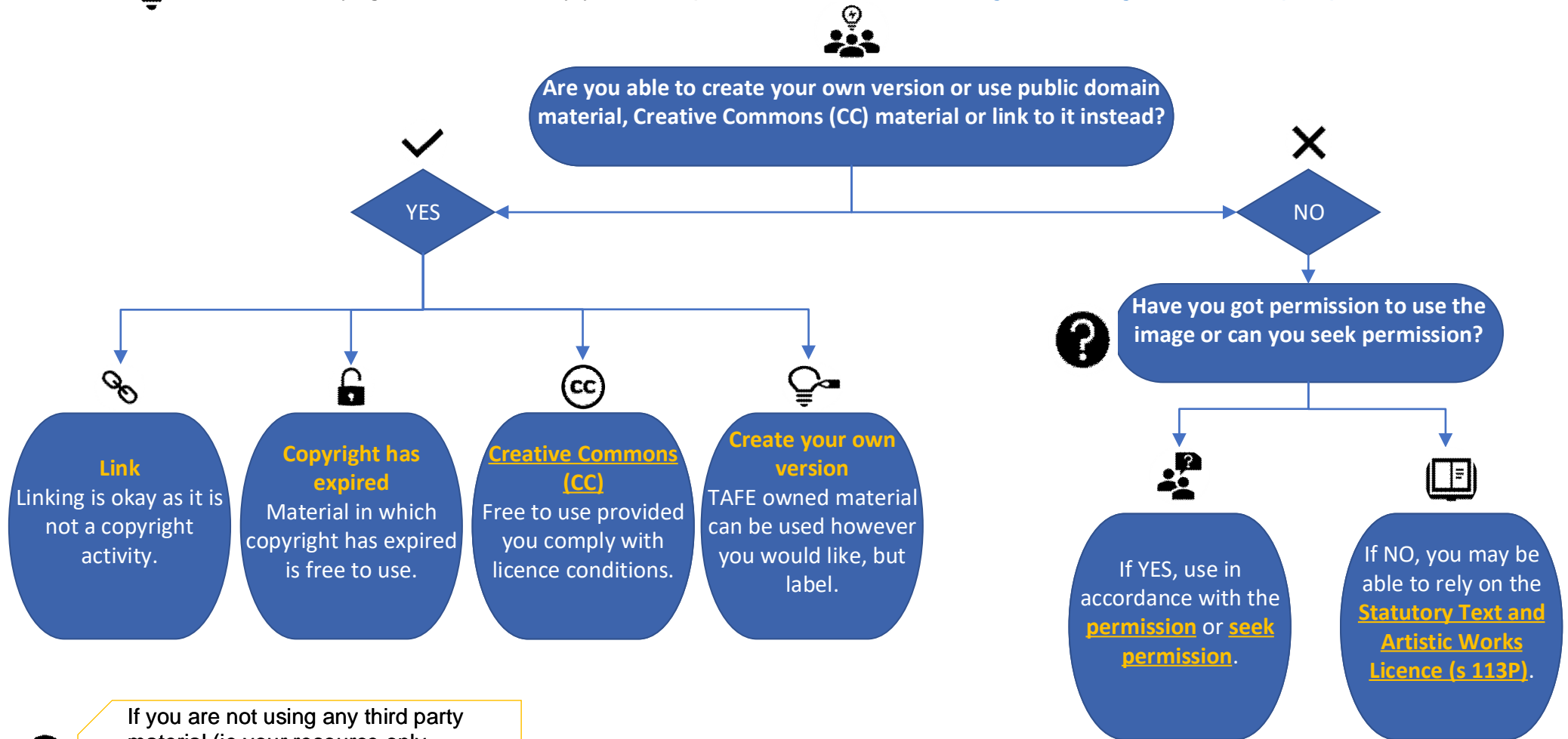


Creating learning resources that include third party text and artistic works



Use this flowchart if you wish to upload teaching resources that include third party text and artistic works (ie material where the copyright is not owned by your TAFE) to a password protected digital teaching environment (DTE).



If you are not using any third party material (ie your resource only includes TAFE owned content), you can use the resource however you like. However, we recommend you license your resource under a Creative Commons (CC) licence.



Remember you must **attribute** all the materials you use. For more information on attribution, see Labelling and Attributing.